

How To Use PCWs to Check Malaria RDTs



Collect:

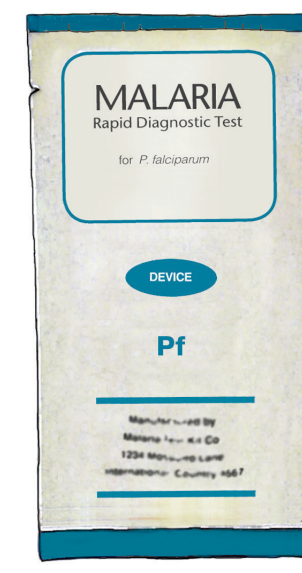
- NEW unopened** PCW packet
- Water vial from resealable aluminium bag
- NEW unopened** Malaria RDT packet
- Pencil
- Malaria RDT buffer
- Timer



PCW packet



Water vial from resealable aluminium bag



RDT packet



Pencil



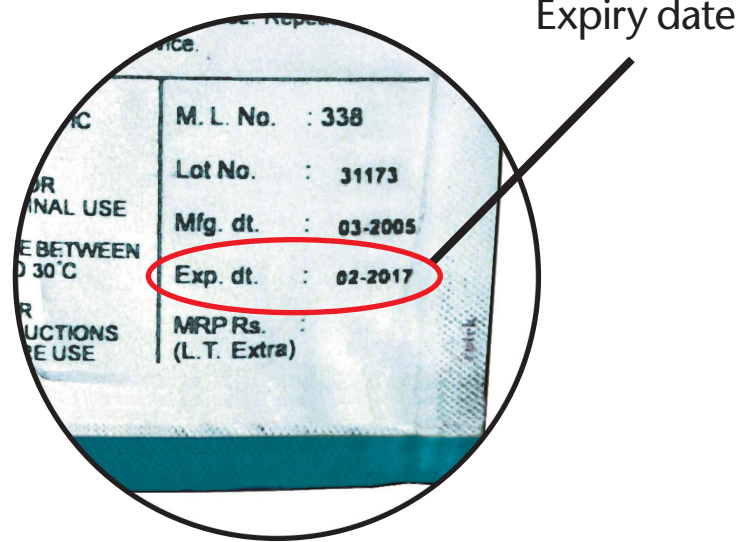
RDT buffer



Timer

READ THESE INSTRUCTIONS CAREFULLY BEFORE YOU BEGIN.

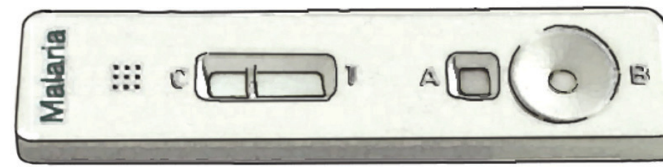
1. Check the expiry date on the **RDT packet**.



Expiry date

2. Open the RDT packet and remove:

a. RDT



b. Desiccant (check colour against RDT manufacturer's instructions)



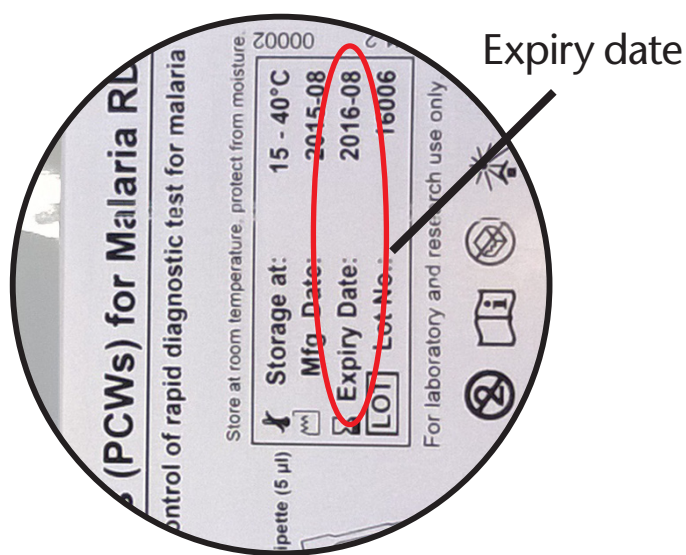
Keep the blood transfer device in the RDT packet as this test will use a pipette instead.



3. Write "PCW test" and today's date on the RDT.



4. Check the expiry date on the **PCW packet**.



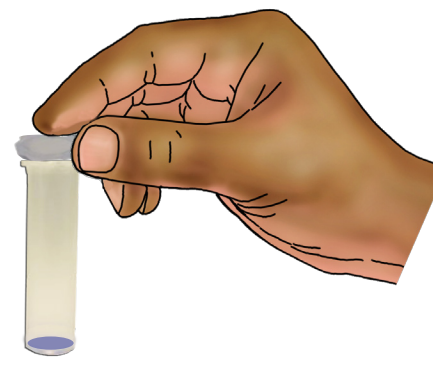
Expiry date

5. Open the **PCW packet** and find the PCW, dropper and pipette.



a. PCW b. Dropper c. Pipette

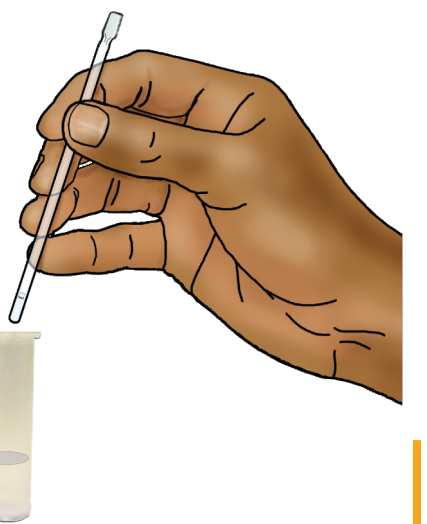
6. Peel off the aluminium foil to open the PCW tube.



7. Take 1 water vial from the resealable aluminium bag. Reseal the bag. **(a)** Peel off the aluminium foil to open the vial, then...



(b) fill the dropper with water from the vial up to the black mark.

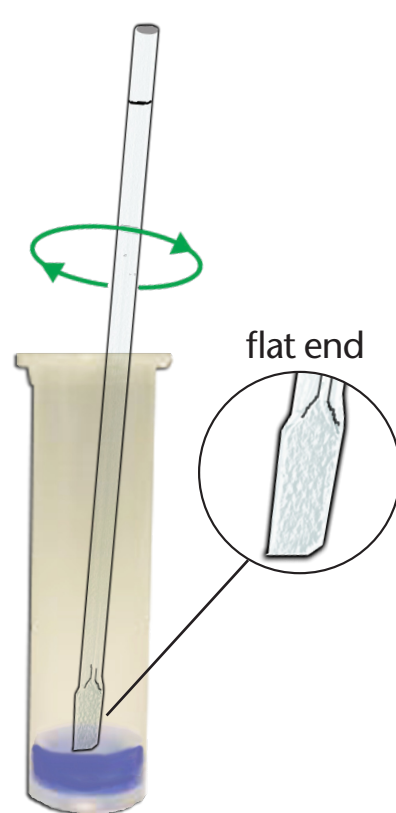


8. Empty the water from the dropper into the PCW.

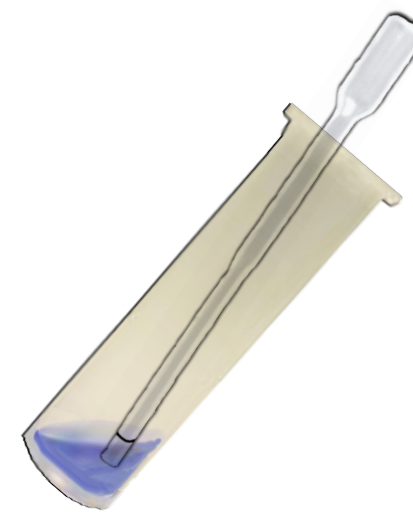


9. Flip the dropper and stir using its flat end for 2 minutes to make a solution with the dried malaria antigens in the bottom of the PCW tube. The blue colour of the solution needs to become homogeneous.

Discard the dropper.

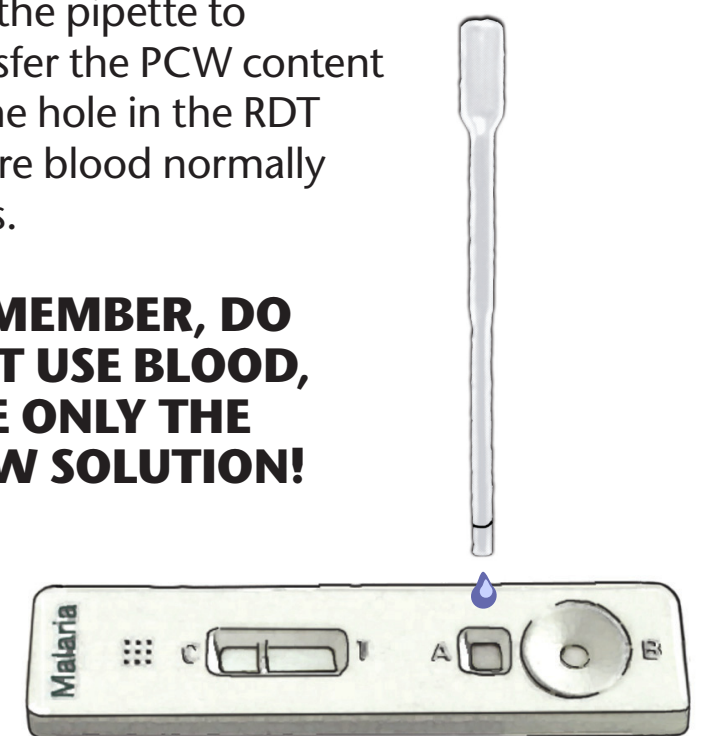


10. Fill the pipette with the PCW content up to the black mark.

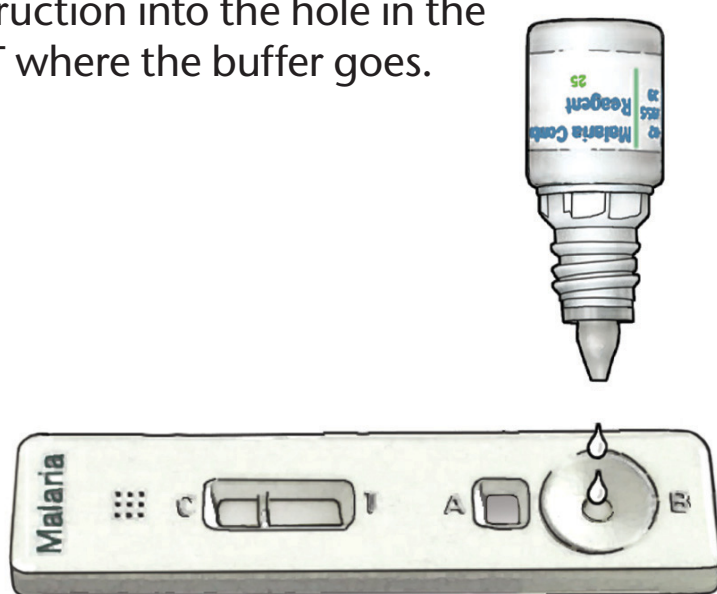


11. Use the pipette to transfer the PCW content to the hole in the RDT where blood normally goes.

REMEMBER, DO NOT USE BLOOD, USE ONLY THE PCW SOLUTION!



12. Put **drops of buffer** as recommended by the RDT instruction into the hole in the RDT where the buffer goes.



13. Wait the length of **time recommended** by the RDT instruction after adding buffer.



14. Read test results as you normally do. The result may be positive, negative or invalid.

NOTE: Do not read the test sooner than recommended by the RDT instruction after adding the buffer. You may get FALSE results.

15. If the RDT test is negative or invalid—that is, if no line appears in window C or T—contact your supervisor.

16. Dispose of PCW and other materials in non-sharps waste container.



NOTE:

Each PCW and RDT test kit can **ONLY BE USED ONE TIME**. Do not try to use either the PCW or the RDT test kit **MORE THAN ONCE**.